

NOTE: 100 PSF FLOOR LOAD THROUGHOUT 1ST FLOOR UNLESS NOTED OTHERWISE.

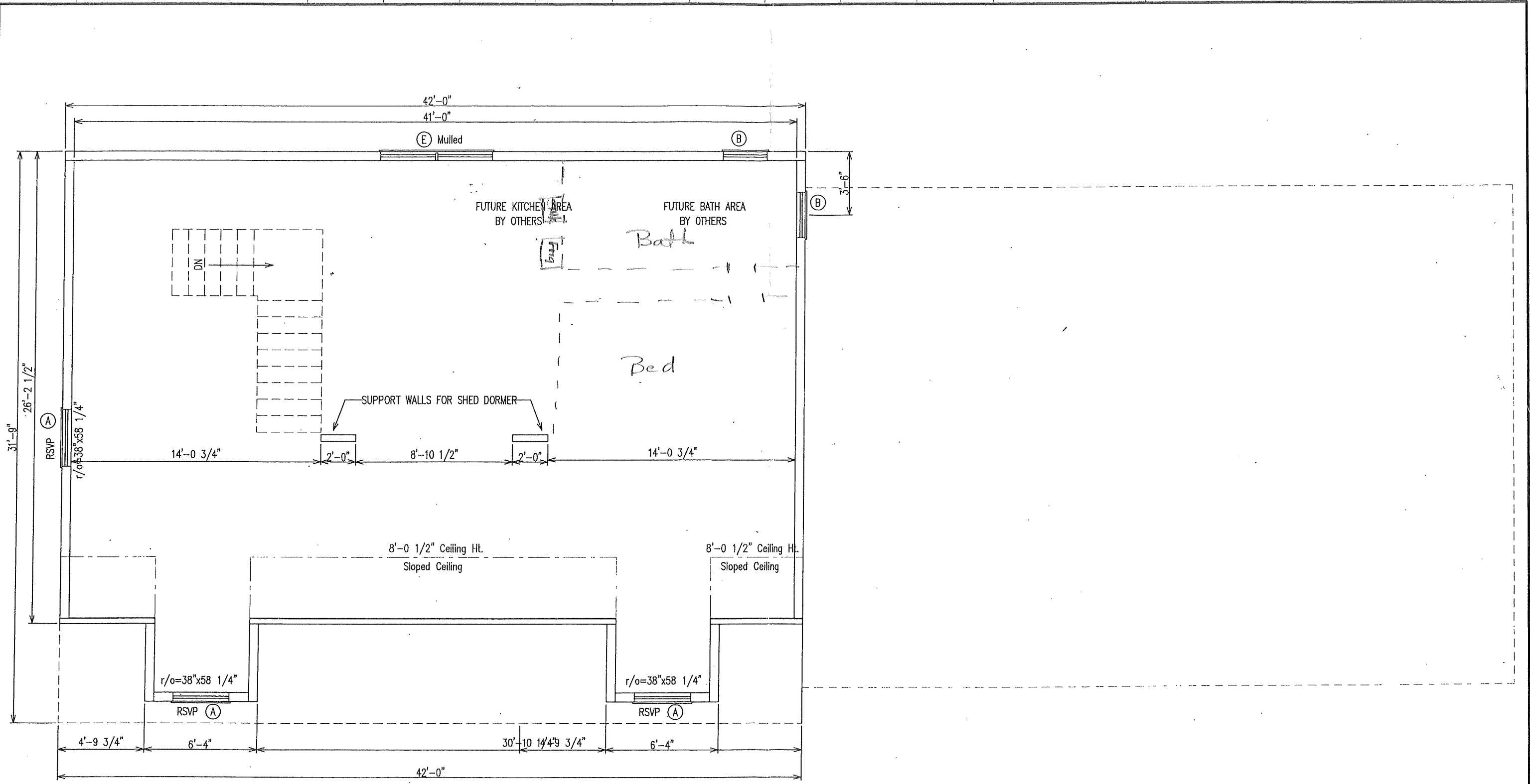
PRELIMINARY FLOOR PLAN

Final floor plan design to be reviewed by PFS and a P.E. for code compliance

REVISIONS	BY
x	x
10-4-05	RCN
9-21-05	RCN
8-30-05	RCN

© copyright 2005 Structural Modulares, Inc.

QUOTE: Q1861 BUILDER: THOMPSON HILL DEL. LOC: PA CUSTOMER: BAUER	 STRUCTURAL MODULARS <small>INC.</small>	<div style="text-align: right; font-weight: bold;">32x42/28x40 CAPE/RANCH</div> <div style="text-align: center; font-size: 24px; font-weight: bold; margin: 10px 0;">FLOOR PLAN</div> <div style="display: flex; justify-content: space-between; font-size: 12px;"> SCALE: 3/16"=1'-0" DATE: 7-13-05 Prelim. Dwg.s by: RCN </div> <div style="display: flex; justify-content: space-between; font-size: 12px; margin-top: 5px;"> REVISIONS: X Prod. Dwg.s by: X </div>
P.O. BOX 607 CLARION, PA. 16214 (814) 764-5555		



NOTE: 2nd Floor Layout by others onsite

REVISIONS	BY
x	x
10-4-05	RCN
9-21-05	RCN
8-30-05	RCN

QUOTE: Q1861 BUILDER: THOMPSON HILL DEL. LOC: PA CUSTOMER: BAUER		32x42/28x40 CAPE/RANCH	
		PROPOSED 2ND FLOOR PLAN	
		SCALE: 3/16"=1'-0"	DATE: 7-13-05
		REVISIONS: X	Prelim. Dwg.s by: RCN
			Prod. Dwg.s by: X

© copyright 2005 Structural Modulars, Inc.