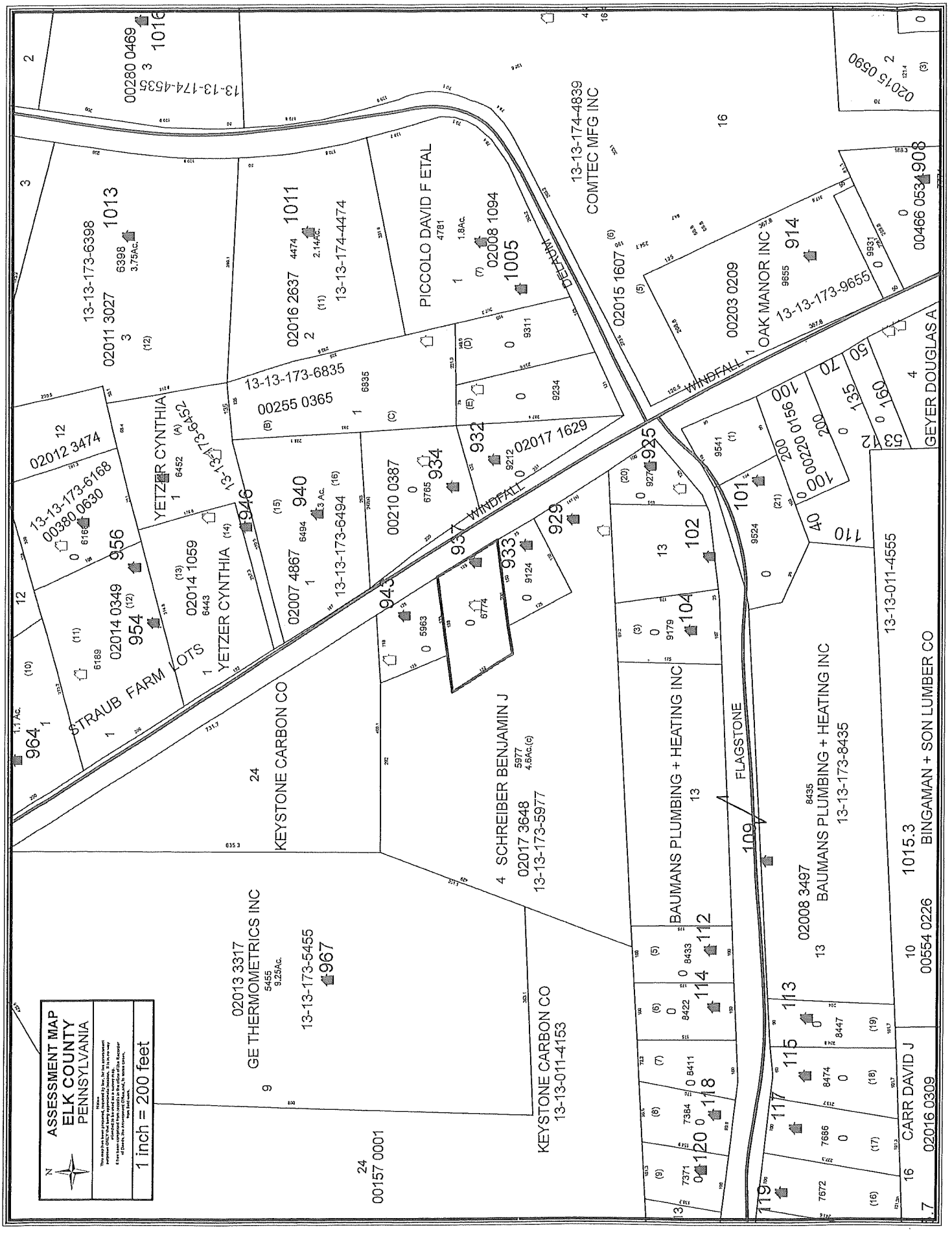


ASSESSMENT MAP
ELK COUNTY
PENNSYLVANIA

Notes:
 1. This map has been prepared by computer from the data provided by the Assessor's Office and is not intended to be used for any other purpose.
 2. The Assessor's Office is not responsible for any errors or omissions on this map.
 3. The Assessor's Office is not responsible for any errors or omissions on this map.

1 inch = 200 feet



02013 3317
 GE THERMOMETRICS INC
 5455
 9.25 AC.
 13-13-173-5455
 967

24
 00157 0001

KEYSTONE CARBON CO
 13-13-011-4153

4 SCHREIBER BENJAMIN J
 5977
 4.8 AC.(C)
 02017 3648
 13-13-173-5977

BAUMANS PLUMBING + HEATING INC
 13
 9179
 02008 3497
 13-13-173-8435

10
 00554 0226
 1015.3
 BINGAMAN + SON LUMBER CO

16
 02016 0309
 CARR DAVID J

17
 02015 0590

13-13-173-6398
 6398
 3.75 AC.
 1013
 02011 3027
 3
 (12)

02016 2637
 4474
 2.14 AC.
 1011
 13-13-174-4474

PICCOLO DAVID F ETAL
 4781
 1.8 AC.
 02008 1094
 1005

13-13-174-4839
 COMTEC MFG INC

02020 0209
 OAK MANOR INC
 9655
 914
 13-13-173-9655

00466 0534
 908

02012 3474
 13-13-173-6168
 6168
 0380 0630
 956
 02014 0349
 954
 (12)
 (11)

02014 1059
 6443
 YETZER CYNTHIA (14)
 946

02007 4867
 6494
 3 AC.
 940
 13-13-173-6494 (16)

020210 0387
 6765
 934
 932
 02017 1629

020210 0387
 6765
 934
 937
 929

02020 0209
 OAK MANOR INC
 9655
 914
 13-13-173-9655

02014 0349
 954
 (12)
 (11)

02014 1059
 6443
 YETZER CYNTHIA (14)
 946

02007 4867
 6494
 3 AC.
 940
 13-13-173-6494 (16)

020210 0387
 6765
 934
 937
 929

02020 0209
 OAK MANOR INC
 9655
 914
 13-13-173-9655

00466 0534
 908